

Technical drawing of a reinforced concrete slab cross-section. The drawing shows a rectangular slab with various reinforcement bars (numbered 1-19) and dimensions. The top reinforcement includes bars 1, 2, 3, 4, 5, 6, 7, 8, 15, 16, 17, and 18. The bottom reinforcement includes bars 19 and 20. The slab is supported by walls on the left and right. Dimensions are given in cm. The total width is 1115 cm, and the total height is 1105 cm. The drawing is labeled 'A' on the left and 'B' on the right.

The diagram shows a 3D-printed part with the following dimensions:

- Top width: 31
- Top radius: 10
- Bottom width: 8
- Bottom radius: 16
- Height: 30
- Internal hole diameter: 29 ± 0.10

Form Pos.	Anzahl	Länge a Lunghezza a [mm]	Länge Einzelstück Lunghezza singola [mm]	Länge Gesamtheit Lunghezza totale [mm]
18.1	3	35	159	477
18.2	2	34	158	316
19.3	2	33	157	314
18.4	2	32	156	312
18.5	2	31	155	310
18.6	2	30	154	308
18.7	2	29	153	306
18.8	2	28	152	304
18.9	2	27	151	302
18.10	2	26	150	300
18.11	2	25	149	298
18.12	2	24	148	296
18.13	2	23	147	294
18.14	2	22	146	292

Somma lunghezze / Summe der Längen = 44.200 mm

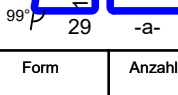
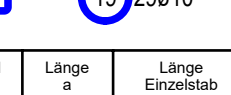
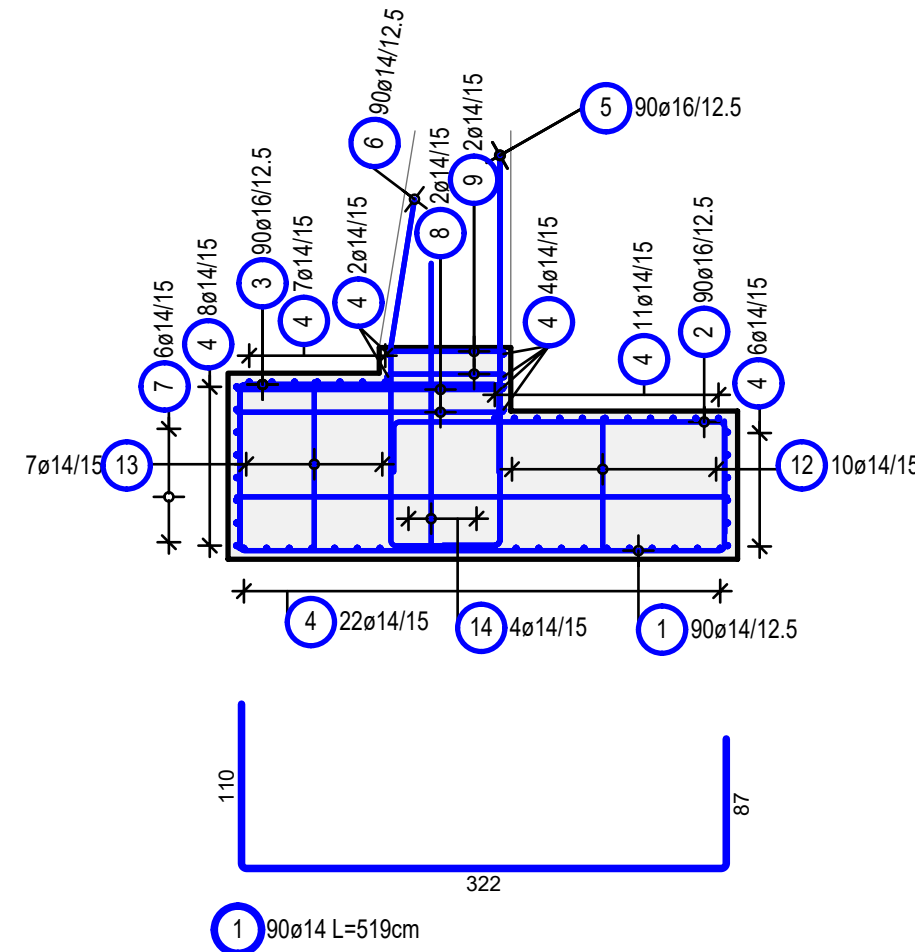

					
Form	Anzahl	Länge a	Länge Einzelzahn	Länge Einzelzahn	Länge Einzelzahn
Pom.	Q.18	Länge a (cm)	Länge Einzelzahn (cm)	Länge Einzelzahn (cm)	Länge Einzelzahn (cm)
19.1	1	36	159	15	15
19.2	2	35	158	16	31
19.3	2	34	157	17	31
19.4	2	33	156	17	31
19.5	2	32	155	17	31
19.6	2	31	154	30	15
19.7	2	30	153	30	15
19.8	2	29	152	30	15
19.9	2	28	151	30	15
19.10	2	27	150	30	15
19.11	2	26	149	29	15
19.12	2	25	148	29	15
19.13	2	24	147	29	15
19.14	2	23	146	29	15
19.15	2	22	145	29	15
Summa Längenzüge /		Summe der Längen = 4410 mm			

Diagram 9: A blue L-shaped profile with a vertical leg of length 77 and a horizontal leg of length 60. The angle between the legs is 91°. Below the diagram is the text: 9 2ø14 L=197cm

Diagram 8: A blue L-shaped profile with a vertical leg of length 177 and a horizontal leg of length 60. The angle between the legs is 91°. Below the diagram is the text: 8 2ø14 L=297cm

Diagram 7: A blue L-shaped profile with a vertical leg of length 326 and a horizontal leg of length 60. The angle between the legs is 91°. Below the diagram is the text: 7 12ø14 L=446cm



					
Form	Anzahl	Länge a	Länge	Länge	Länge
Pos.	Q. II	in mm	Luftpumpe a	Einzelstück Luftpumpe	Luftpumpe Einzelstück
3.1	1	174	344	344	344
3.2	5	172	342	342	1710
3.4	5	171	341	341	1705
3.5	6	170	340	340	2000
3.6	6	169	339	339	2002
3.7	5	168	338	338	1644
3.8	6	167	337	337	2022
3.9	5	166	336	336	1686
3.10	6	165	335	335	2016
3.11	5	164	334	334	1670
3.12	6	163	333	333	1986
3.13	6	162	332	332	1990
3.14	5	161	331	331	1655
3.15	6	160	330	330	1986
3.16	5	159	329	329	1644
3.17	6	158	328	328	1966
Summe lungepumpe /		Summe der Längen = 302.000 mm			

Pos.	Stk	ø	Einzel Länge	Gesamt Länge	Masse
pos.	n.		lung. singola	lunghezza totale	peso
		[mm]	[m]	[m]	[kg]
1	90	14	5.19	467.10	565.1
2	90	16	3.30	297.00	469.2
3	90	16	-X-	302.00	477.1
4	60	14	11.15	669.00	809.4
5	90	16	2.99	269.10	425.1
6	90	14	2.72	244.80	296.2
7	12	14	4.46	53.52	64.7
8	2	14	2.97	5.94	7.1
9	2	14	1.97	3.94	4.7
10	2	14	2.82	5.64	6.8
11	2	14	1.82	3.64	4.4
12	21	14	2.07	43.47	52.6
13	14	14	2.32	32.48	39.3
14	7	14	2.50	17.50	21.1
15	26	20	3.04	79.04	195.2
16	4	16	11.05	44.20	69.8
17	26	16	2.54	66.04	104.3
18	29	10	-X-	44.30	27.3
19	29	10	-X-	44.01	27.1

Gesamtmasse / peso totale [kg] : 3667.4

[illegible][illegible]

AUTONOME PROVINZ BOZEN - SÜDTIROL PROVINCIA AUTONOMA DI BOLZANO		GEMEINDE VAHRN COMUNE DI VARNÀ
--	---	-----------------------------------

AUSFÜHRUNGSPROJEKT - PROGETTO ESECUTIVO


1	10.08.2018	Tabelle Materialien/ Tabella materiali	T. Ungerer	G. Fischmaller
0	22.01.2016	1. Ausgabe / 1ª edizione	M. Ponticelli	M. Böhm
Rev.	Datum/data	Ausgabe, Änderungen / edizione, aggiornamento	erstellt/elaborato	geprüft/ esaminato
				O. Pape
				freigegeben / approvato

Auftraggeber:	commitment:
AUTONOME PROVINZ BOZEN Ressort für Bauen Amt für Straßenbau Nord/Ost	PROVINCIA AUTONOMA DI BOLZANO Dipartimento ai lavori pubblici Ufficio tecnico strade nord/est

Dokumenttitel:	titolo del documento
TUNNEL VAHRN	GALLERIA VARN
PORTAL NORD	IMBOCCO NORD
FLÜGELWAND OST FUNDAMENT 4	MURO D'ALA EST FONDAZIONE
BEWEHRUNG	ARMATURA

 	Maßstab/scale: 1:50

PLANUNGSGRUPPE	ILF-EUT	GRUPPO DI PROGETTAZIONE
c/o EUT Engineering GmbH Dantestraße 134, 39042 Brixen	Tel. +39 0472 272400 Email: info@eut.bz.it	c/o EUT Engineering srl Via Dante 134, 39042 Bressanone

		Plan Nr./tav. n.: <div style="text-align: right; font-size: 1.2em;">BV-S-370</div>
--	---	---

<p>Dr. Ing. GEORG FISCHNER Nr. 924 INGENIEURKAMMER DER PROVINZ BOZEN</p>	<p>Einlage Nr./allegato n.: 4-70</p>
--	--------------------------------------